

CIVA UT VALIDATION IN SEPARATED T/R CONFIGURATIONS

*Fabrice, FOUCHER, Sébastien LONNE (EXTENDE)
Gwénaél TOULLELAN, Steve MAHAUT, Sylvain CHATILLON (CEA)*



OVERVIEW

- | Introduction
- | 1) Dual Element transducer
 - Description of the configuration
 - Acquisitions performed
 - Comparison Simulation / Experiment
- | 2) Tandem PA configuration
 - Description of the configuration
 - Acquisitions performed
 - Comparison Simulation / Experiment
- | Conclusion

OVERVIEW

- | Introduction
- | 1) Dual Element transducer
 - Description of the configuration
 - Acquisitions performed
 - Comparison Simulation / Experiment
- | 2) Tandem PA configuration
 - Description of the configuration
 - Acquisitions performed
 - Comparison Simulation / Experiment
- | Conclusion

Introduction: EXTENDE activities

| CIVA Distribution



| Technical support

| Training courses

| Consulting

| Research & Development



Introduction

- | Simulation in NDT more and more used industrially, particularly to support qualification or design process
- | Allows to study a wide scope of configuration at low cost, complementary to real trials
- | Model reliability is of first importance
- | Validation works (UT, ET and RT) are performed in the frame of a collaboration EXTENDE / CEA, then published on EXTENDE website:

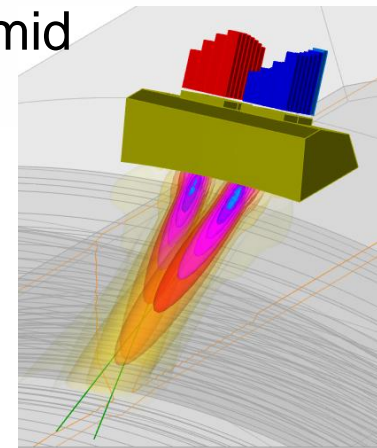
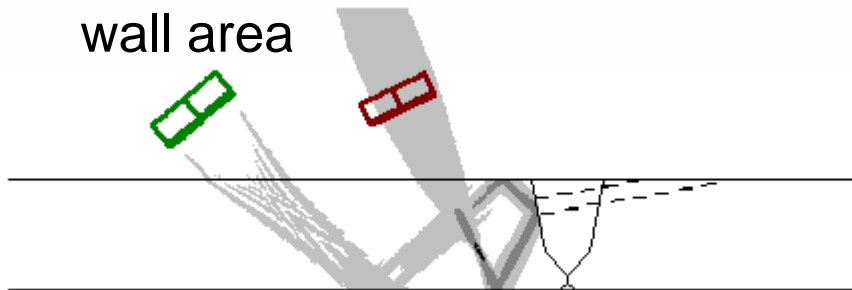
www.extende.com

Introduction

- | The process involves several stages:
 - To define and perform trials, check and improve repeatability and reproducibility of measurements
 - To describe precisely input data in CIVA
 - To perform CIVA computations, analyse results and compare with experiments
- | This presentation deals with 2 types of separated Transmit/receive UT transducer:
 - Dual Element probe
 - Tandem Phased-Array set up

Introduction

- | 1) Dual Element Probe:
 - Can inspect sub surface area thanks to a very short dead zone
 - Good performance in attenuating materials such as bimetallic weld
- | 2) Tandem Configuration:
 - Widely used for pipe girth welds inspection (such as Zonal Discrimination technique) especially for the mid wall area



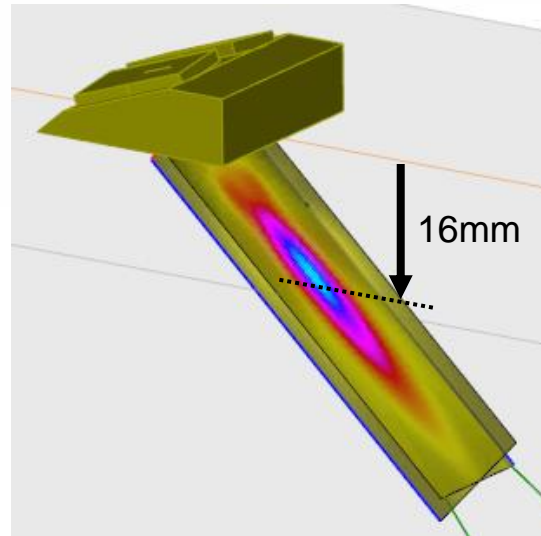
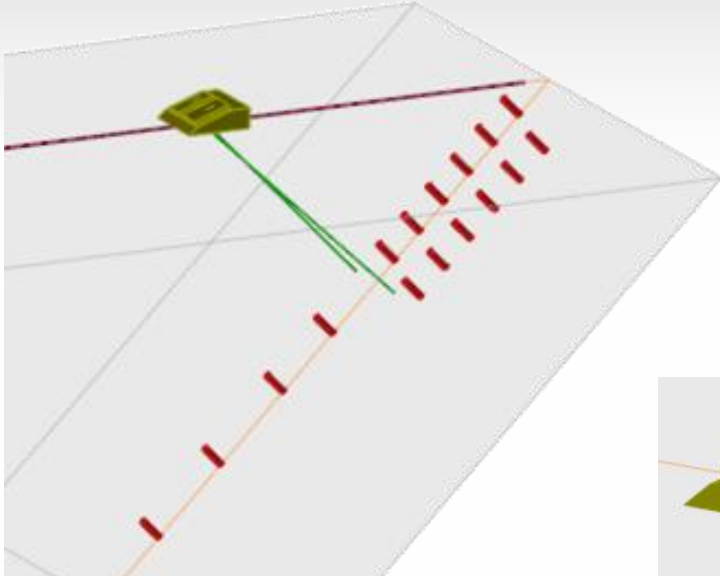
OVERVIEW

- | Introduction
- | 1) Dual Element transducer
 - Description of the configuration
 - Acquisitions performed
 - Comparison Simulation / Experiment
- | 2) Tandem PA configuration
 - Description of the configuration
 - Acquisitions performed
 - Comparison Simulation / Experiment
- | Conclusion

Dual Element Probe

I Description of the configuration

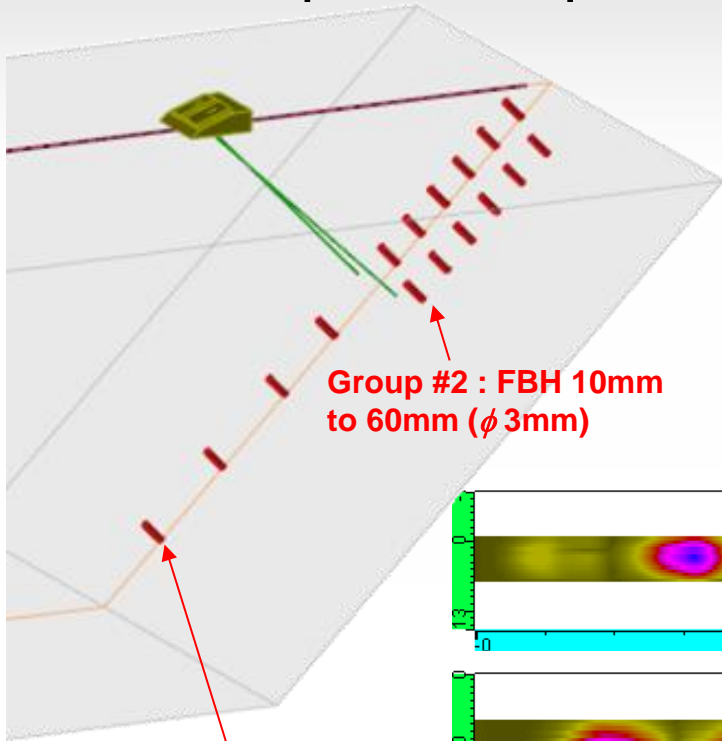
- Carbon Steel Mock-up
- FBH, 3mm diameter
- Range of depths, from 5 to 150mm
- TRL 45° probe, 4MHz



Dual Element Probe

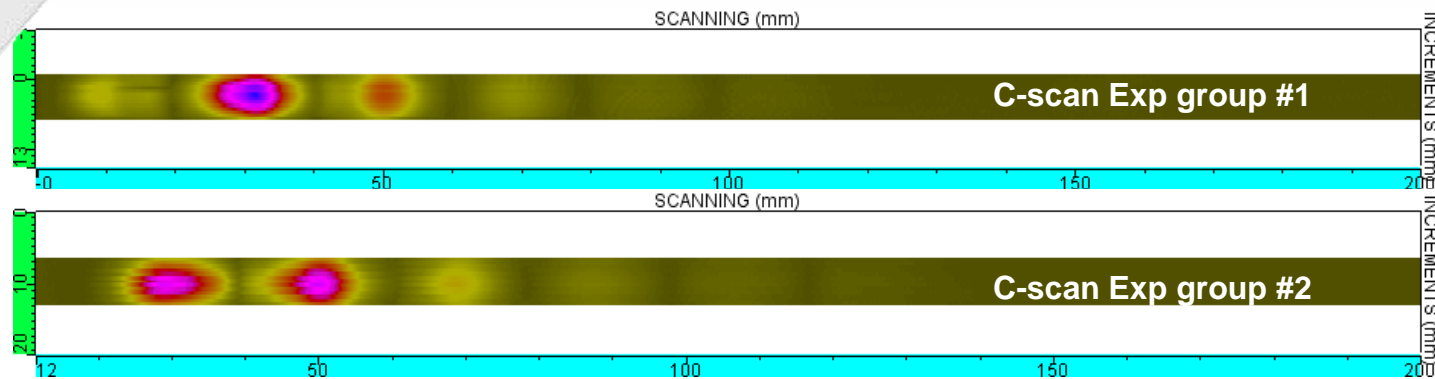
Acquisitions performed:

- Exemple of obtained Cscan
- FBH, 3mm diameter
- Range of depths, from 5 to 150mm



Group #2 : FBH 10mm to 60mm (ϕ 3mm)

Group #1 : FBH 5mm to 150mm (ϕ 3mm)

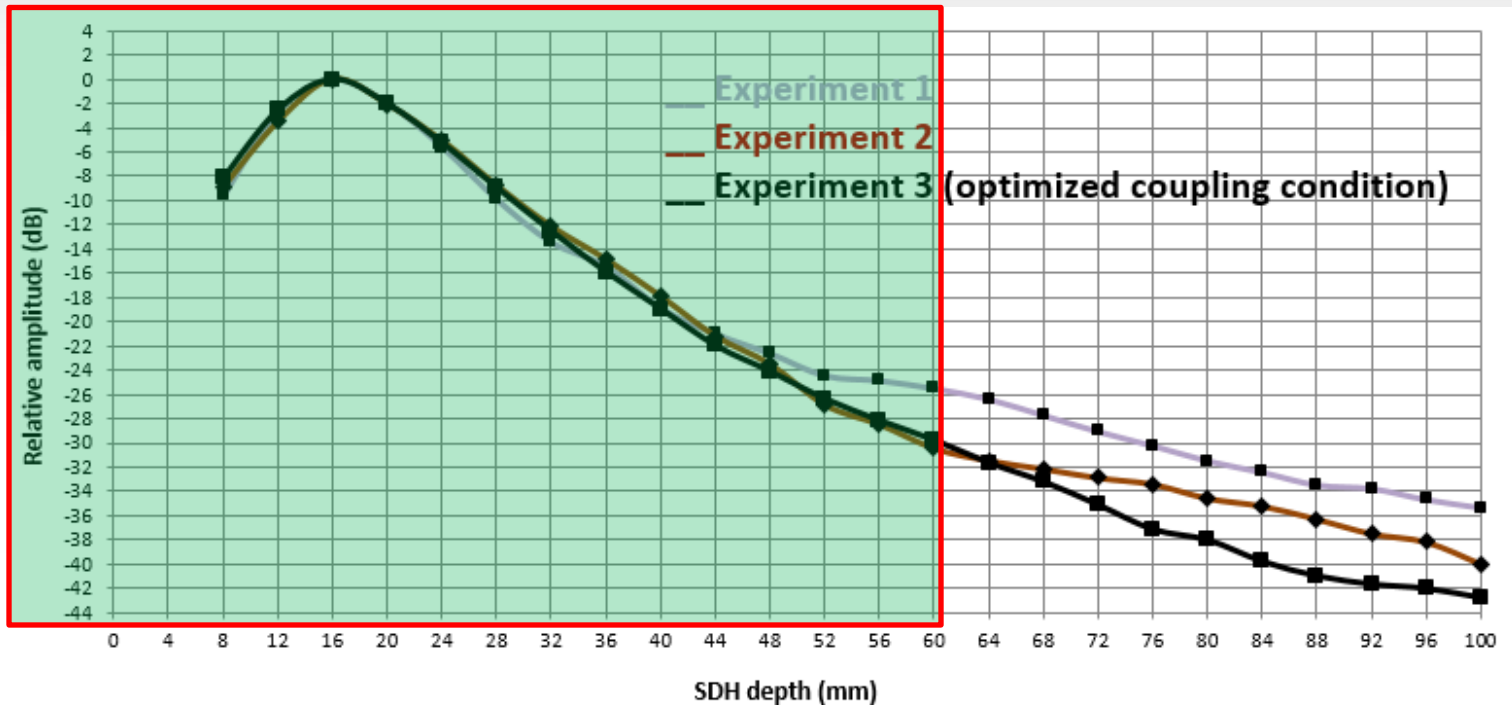


Dual Element Probe

- | Acquisitions performed: Repeatability/Reproducibility
 - Contact and coupling conditions may change during mechanical scan (variation of adhesion, change of orientation,...)
 - Impact on reflector responses can be very strong
 - Necessity to optimize the mechanical holding device to ensure good coupling and reach a repeatability / reproducibility at +/-2 dB.

Dual Element Probe

- Acquisitions performed: Repeatability/Reproducibility



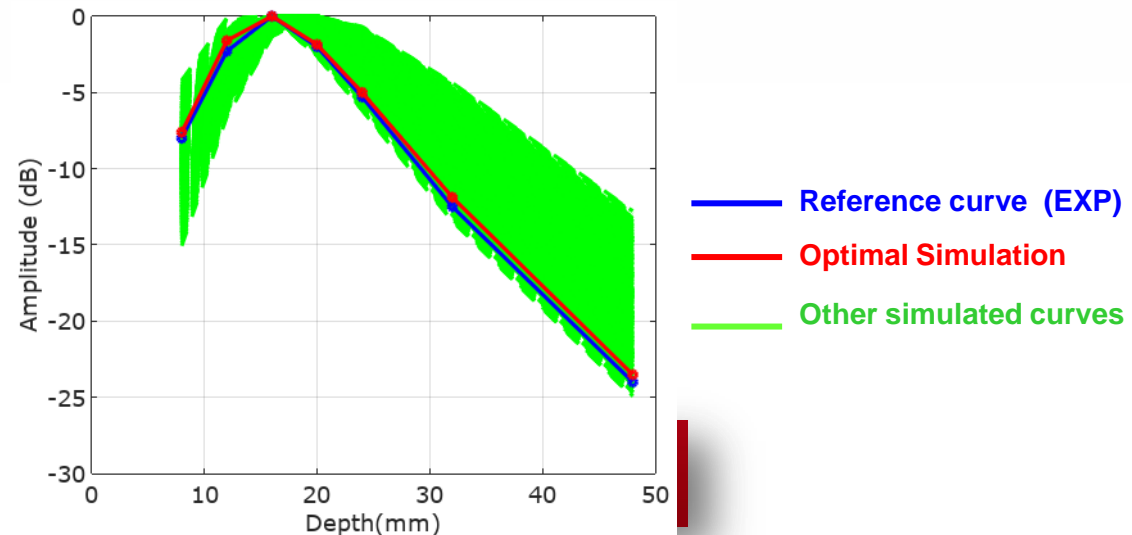
- Comparisons vs. simulation have been done until 60 mm depth (good reproducibility and action zone for this transducer)

Dual Element Probe

- | Comparison simulation vs. measurements
 - To accurately model such transducer, necessary of good and accurate knowledge of input data.
 - Not easy to get with such Dual Element Probe (incidence angle, roof angle, crystal separation distance, etc.)
 - Without precise and clear data, RT or CT can be performed.
 - CIVA can be used to find out relevant parameters by inverse process
 - Principle: Variation of probe parameters in a relevant range, then computation of DAC curves, compared to experimental ones, and selection of the « best fit »

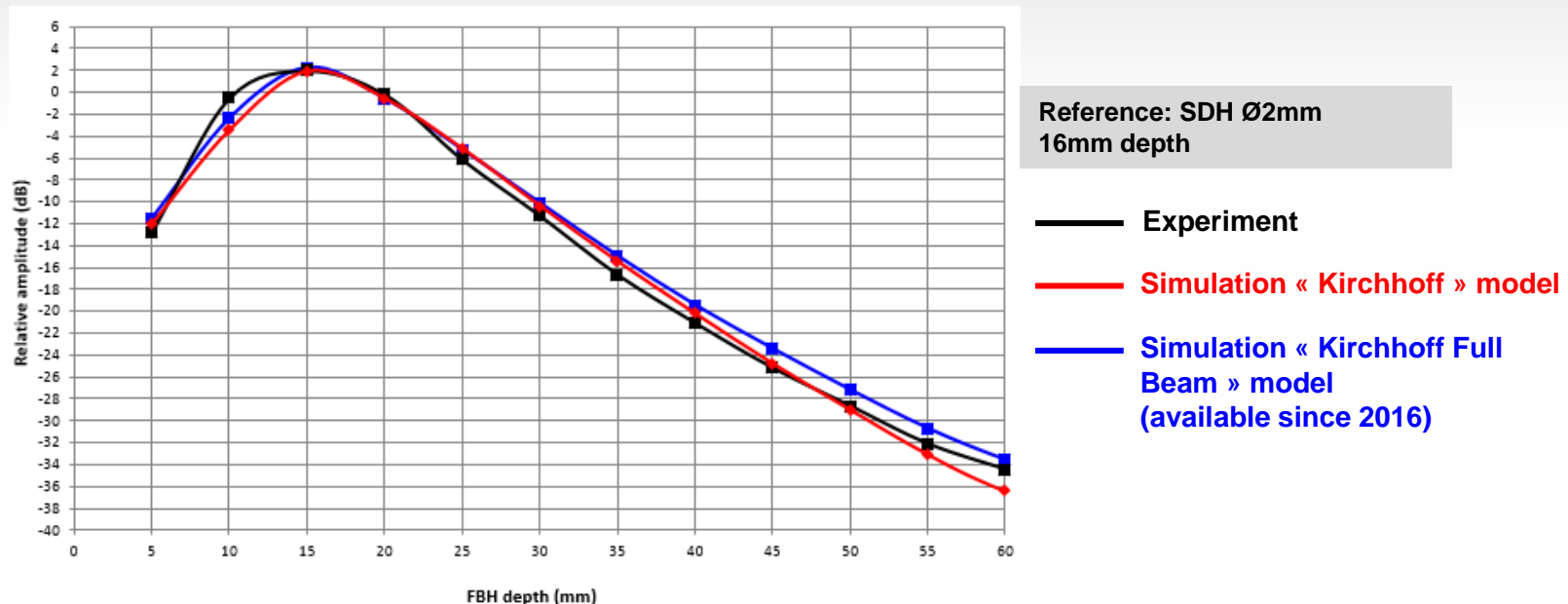
Dual Element Probe

- Comparison simulation vs. measurements
 - To accurately model such transducer, necessary of good and accurate knowledge of input data.
 - CIVA can be used to find out relevant parameters by inverse process
 - Principle: Variation of probe parameters in a relevant range, then computation of DAC curves, compared to experimental ones, and selection of the « best fit »



Dual Element Probe

Comparison simulation vs. measurements



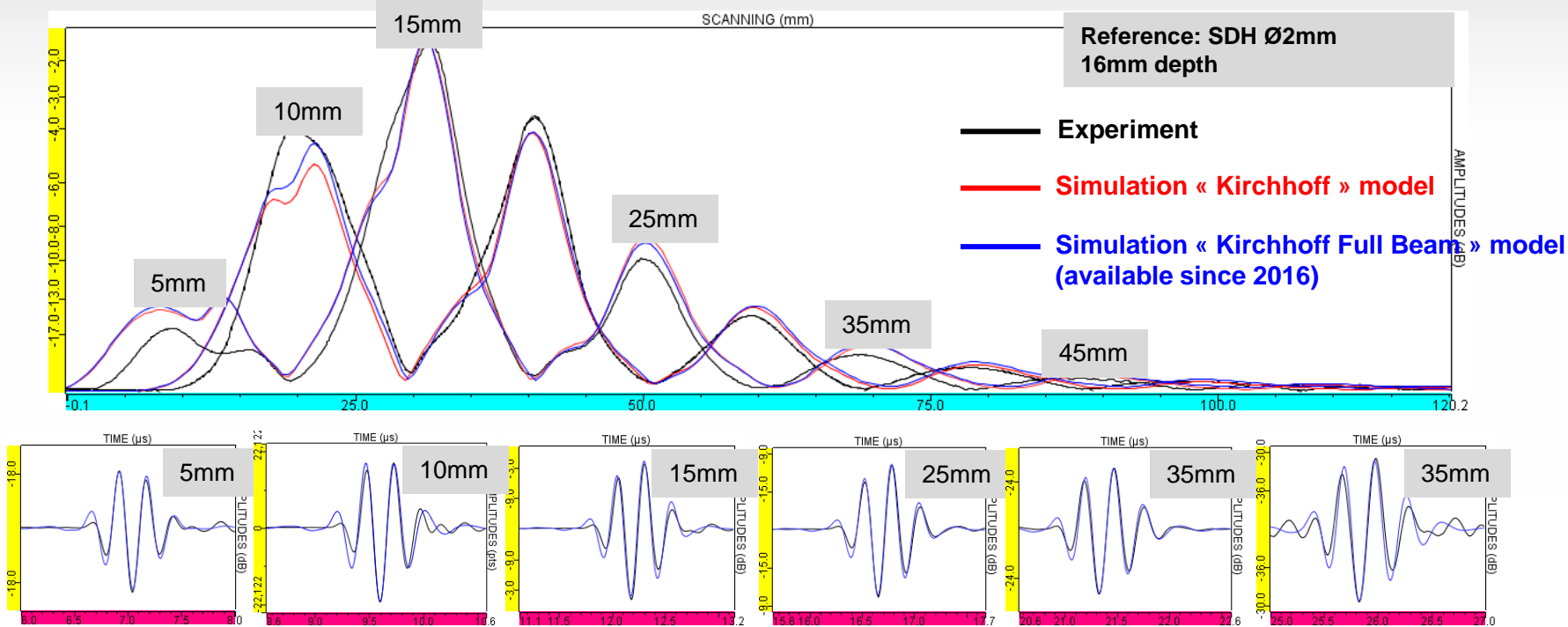
2 CIVA models evaluated:

- Kirchhoff (fast)
- Kirchhoff – Full Beam: More accurate when « complex » fields

Both models give good prediction (within +/-2dB experimental uncertainty)

Dual Element Probe

Comparison simulation vs. measurements



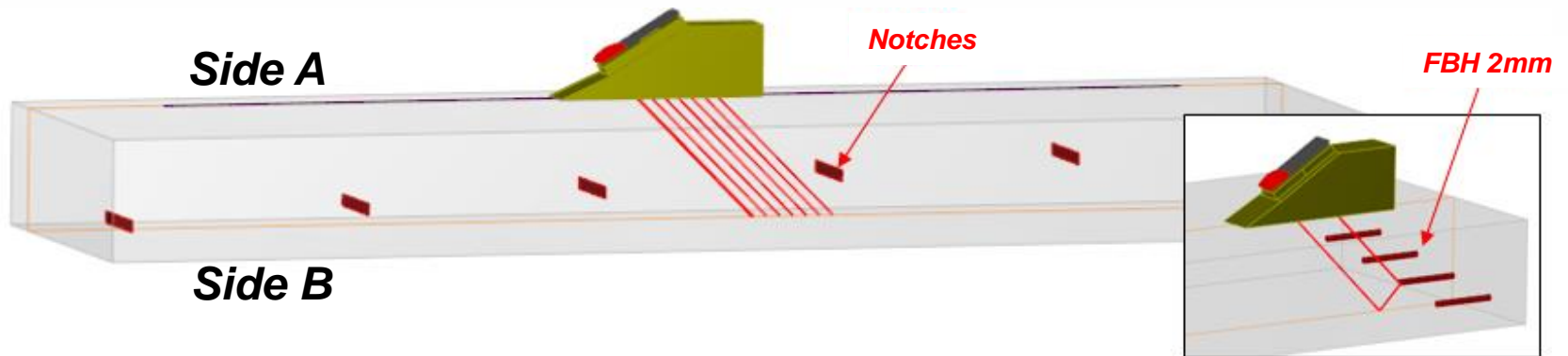
Very good agreement simulations vs. Measurements both on waveforms and echodynamic curves

OVERVIEW

- | Introduction
- | 1) Dual Element transducer
 - Description of the configuration
 - Acquisitions performed
 - Comparison Simulation / Experiment
- | 2) Tandem PA configuration
 - Description of the configuration
 - Acquisitions performed
 - Comparison Simulation / Experiment
- | Conclusion

Configuration TANDEM

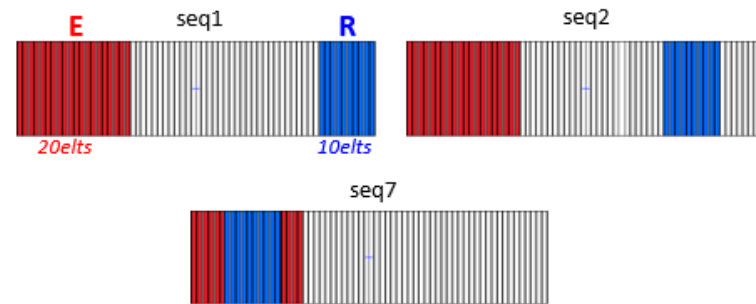
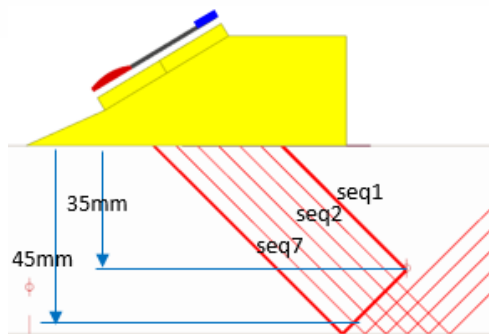
- | Description of the configuration
 - Carbon Steel Mock-up , thickness 50mm
 - Notches (planar defects) 5mm height, at different depths (each 5mm)
 - Inspection from both sides A and B, notches depths from 7.5 to 47.5 mm
 - Calibration on FBH 2mm diameter



Configuration TANDEM

I Description of the configuration

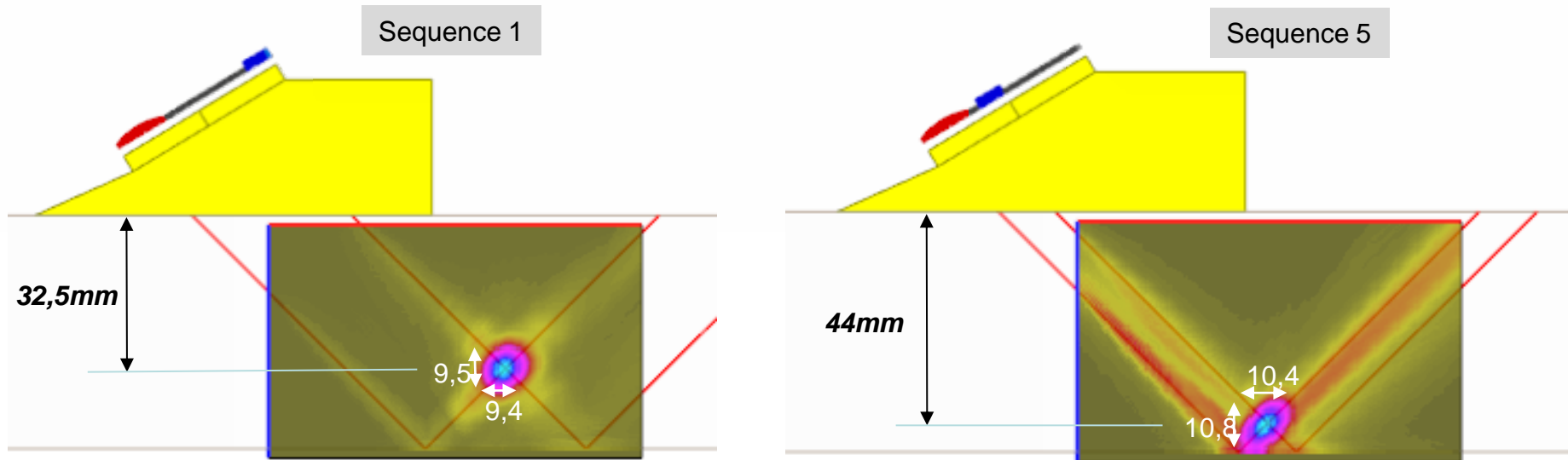
- Linear PA probe 64 elements, frequency 5MHz, on a wedge refracting shear waves 45°
 - Pitch & frequency given by probe manufacturer
 - Experimental characterization for the wedge (geometry, incidence angle, sound velocity)
 - Transmission pattern: 20 First elements of the array
 - Reception: Electronic scan, group of 10 elements, 7 sequences



Configuration TANDEM

I Description of the configuration

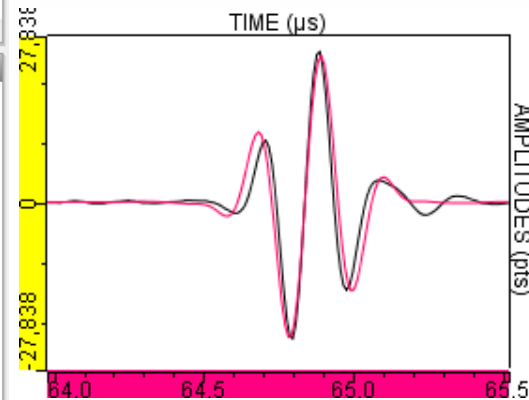
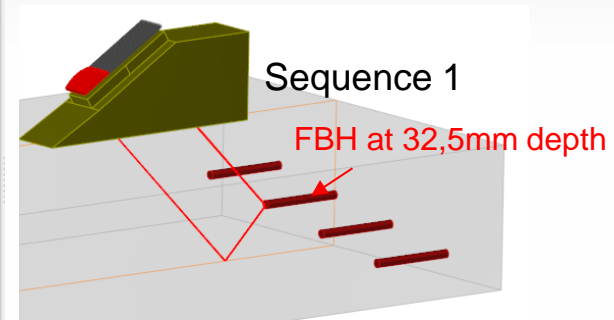
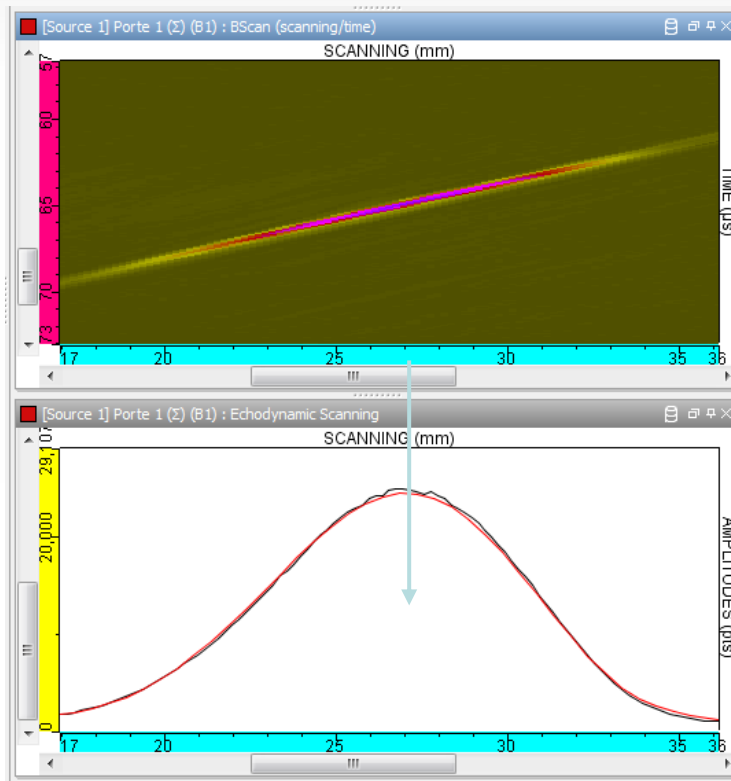
- Linear PA probe 64 elements, frequency 5MHz, on a wedge refracting shear waves 45°
 - Focusing S45 at 45mm depth in transmission
 - No delay law in reception



Configuration TANDEM

Acquisitions performed:

- Calibration: Sequence 1, FBH 32.5mm depth

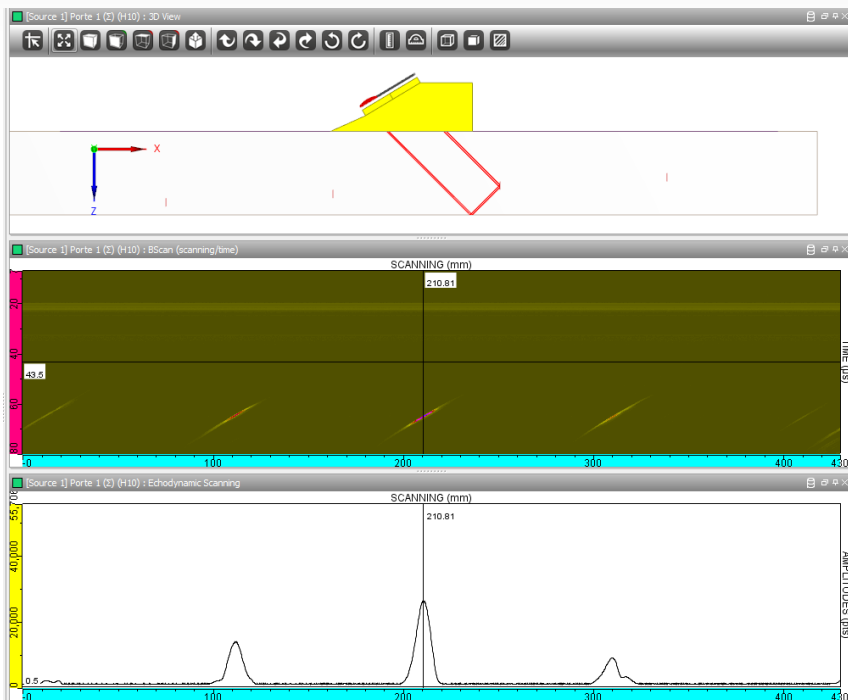


Configuration TANDEM

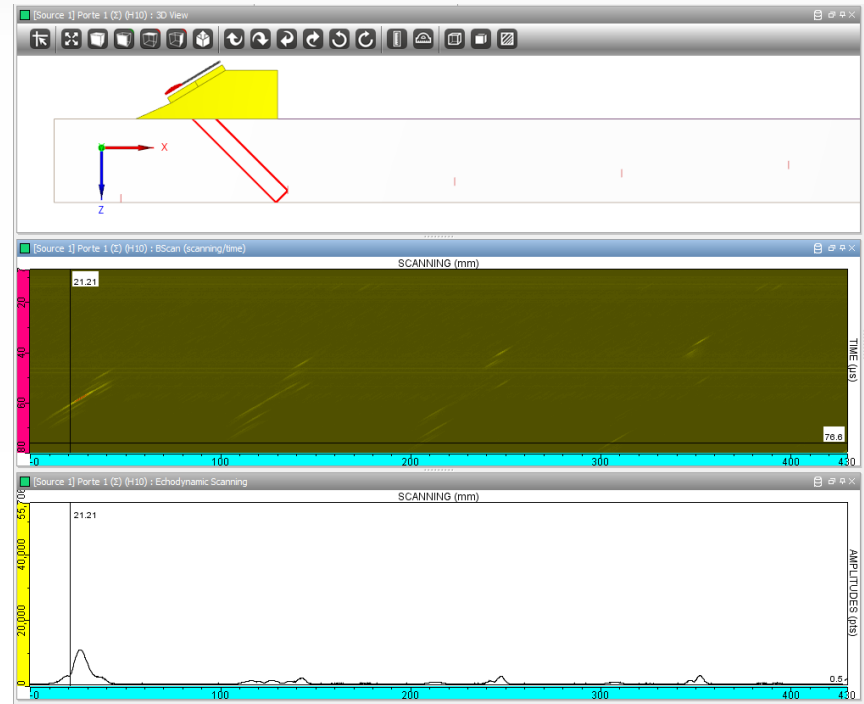
Acquisitions performed

Reference Seq 1
FBH 32.5mm depth

Seq 1



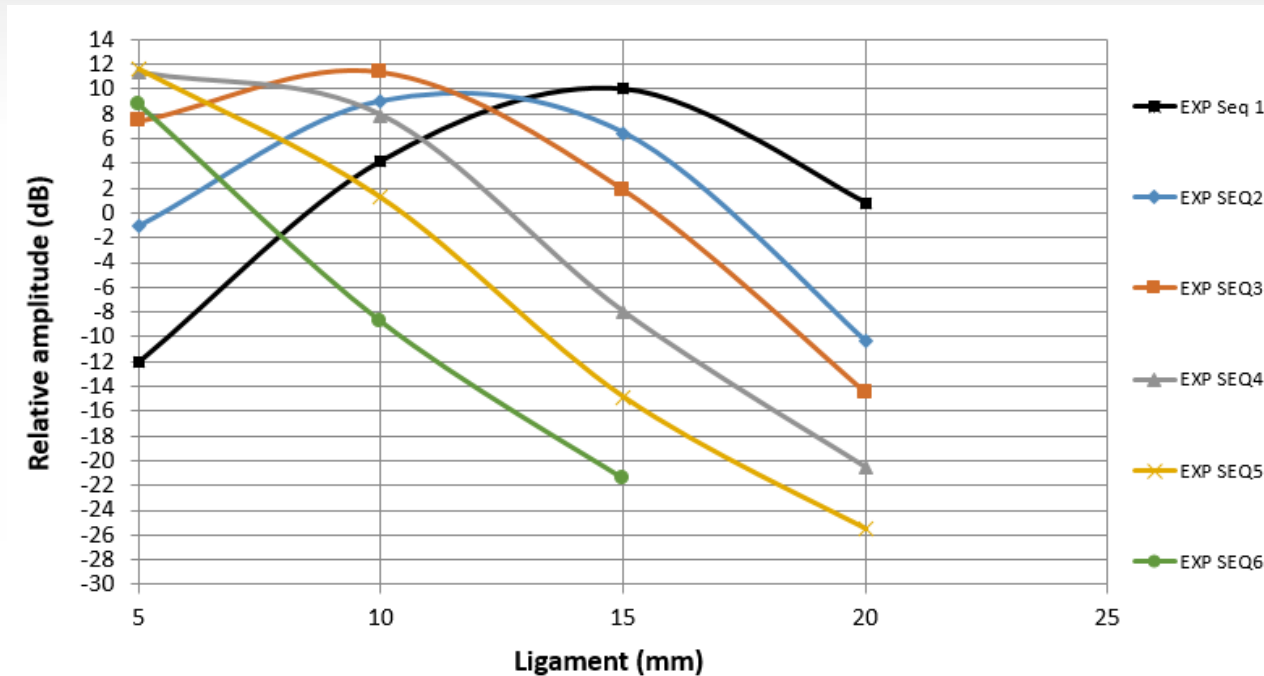
Seq 7



Configuration TANDEM

Acquisitions performed

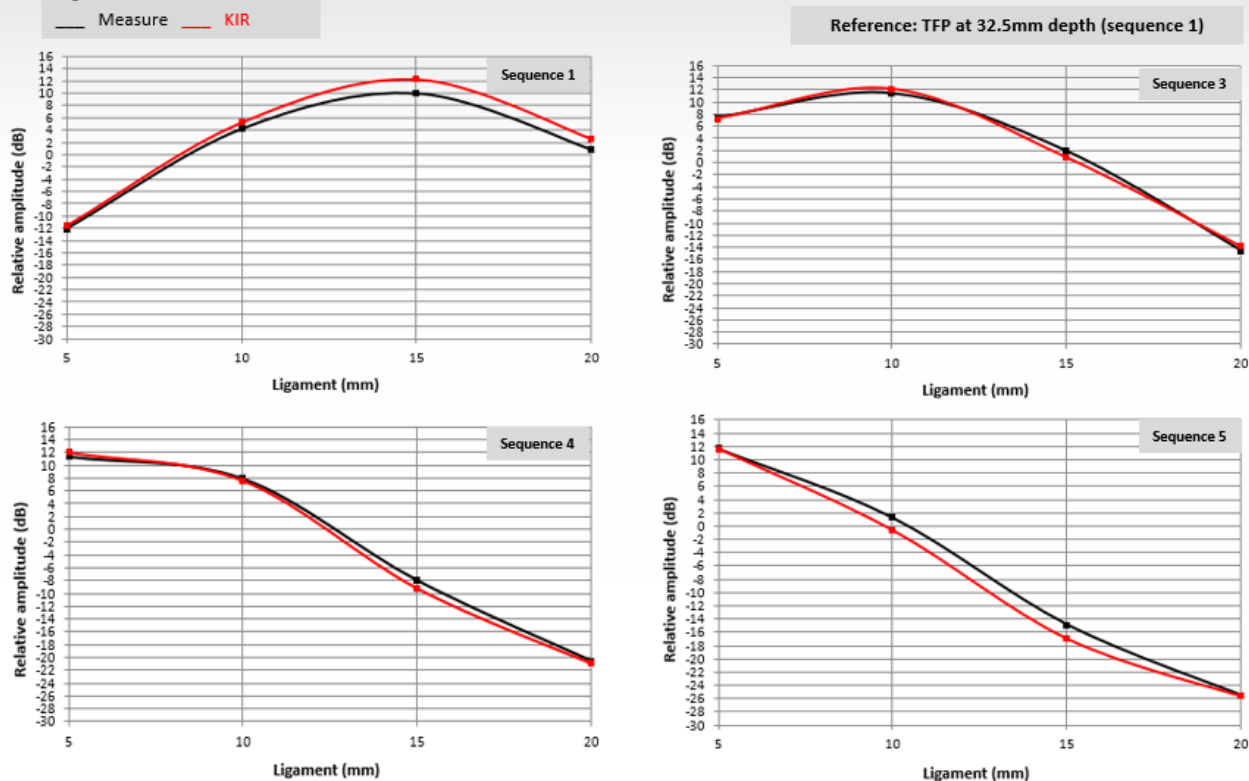
Reference Seq 1
FBH 32.5mm depth



This graphs (defect response vs depth for all seq.) highlights advantages of Phased Array tandem: **To be able to detect defects on a wide range of depths with pretty similar sensitivity**, thanks to electronic scanning and multi-channels

Configuration TANDEM

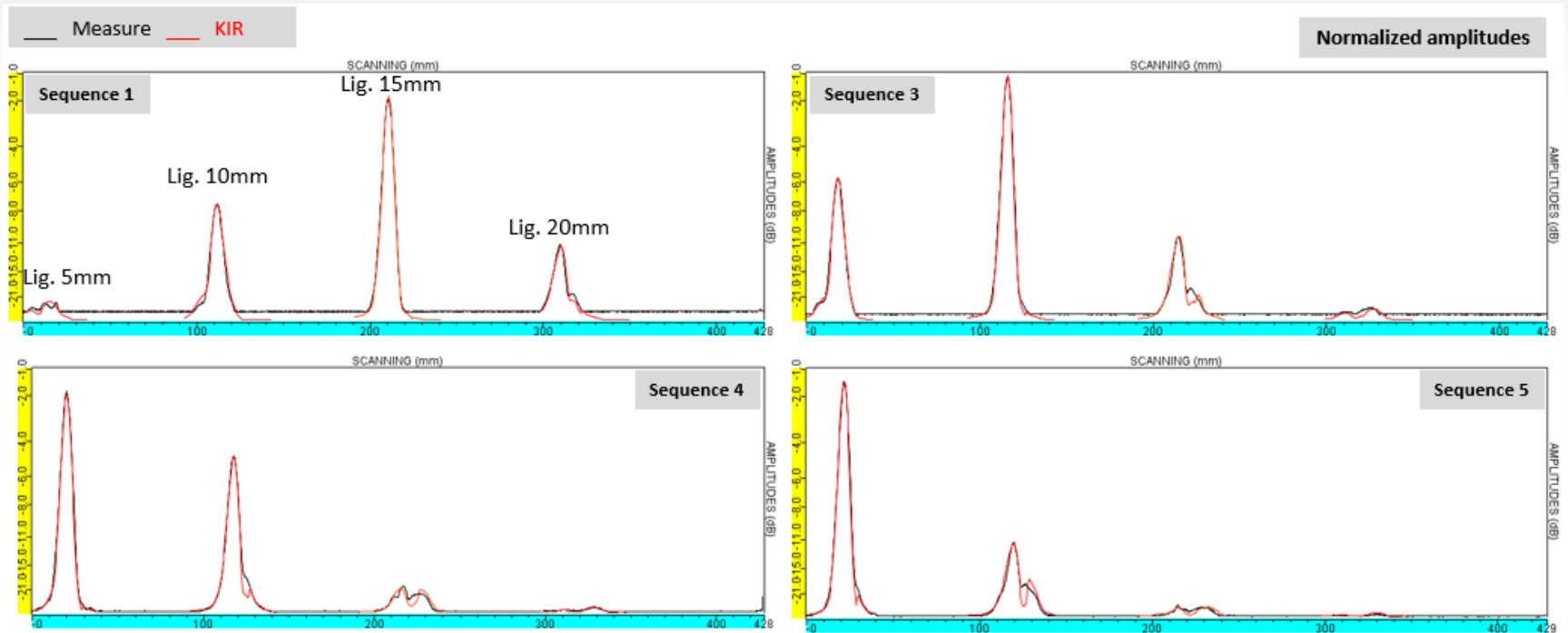
Comparison simulation vs. measurements



Very good agreement in amplitude, within +/-2dB difference

Configuration TANDEM

Comparison simulation vs. measurements



Very good agreement of echoes shape, from echodynamic curves

OVERVIEW

- | Introduction
- | 1) Dual Element transducer
 - Description of the configuration
 - Acquisitions performed
 - Comparison Simulation / Experiment
- | 2) Tandem PA configuration
 - Description of the configuration
 - Acquisitions performed
 - Comparison Simulation / Experiment
- | Conclusion

Conclusion

- | Comparisons simulations / experiments performed on separated T/R configurations
- | In both cases, CIVA simulations validated with:
 - Very good quantitative prediction, within +/-2dB, about the experimental uncertainty
 - Very good qualitative prediction of echoes (A-Scan waveforms, echodynamic curves)

Conclusion

- | Caution should be taken to perform such validation studies
- | Particularly, the experimental uncertainty shall be evaluated. Repeatability/Reproducibility tests shall be performed
- | More results of such experimental characterisation cases of CIVA models available on our website:

[***www.extende.com***](http://www.extende.com)